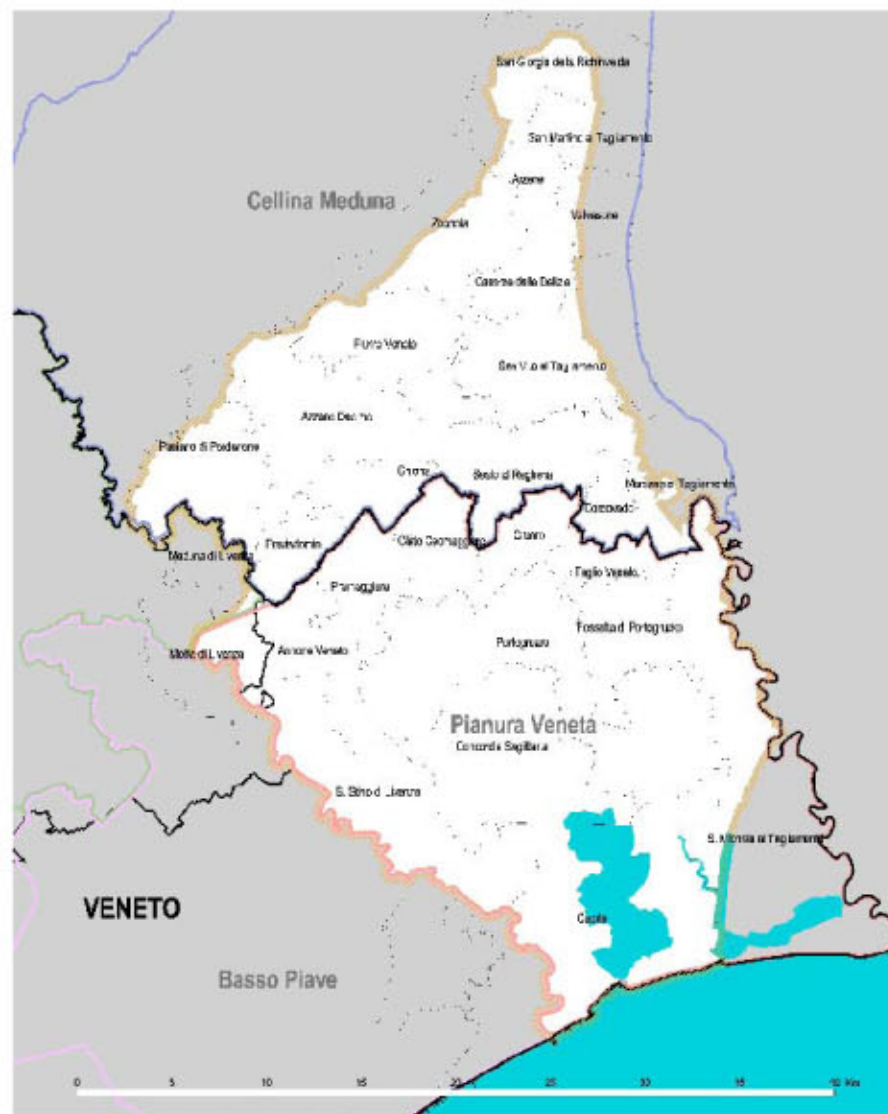






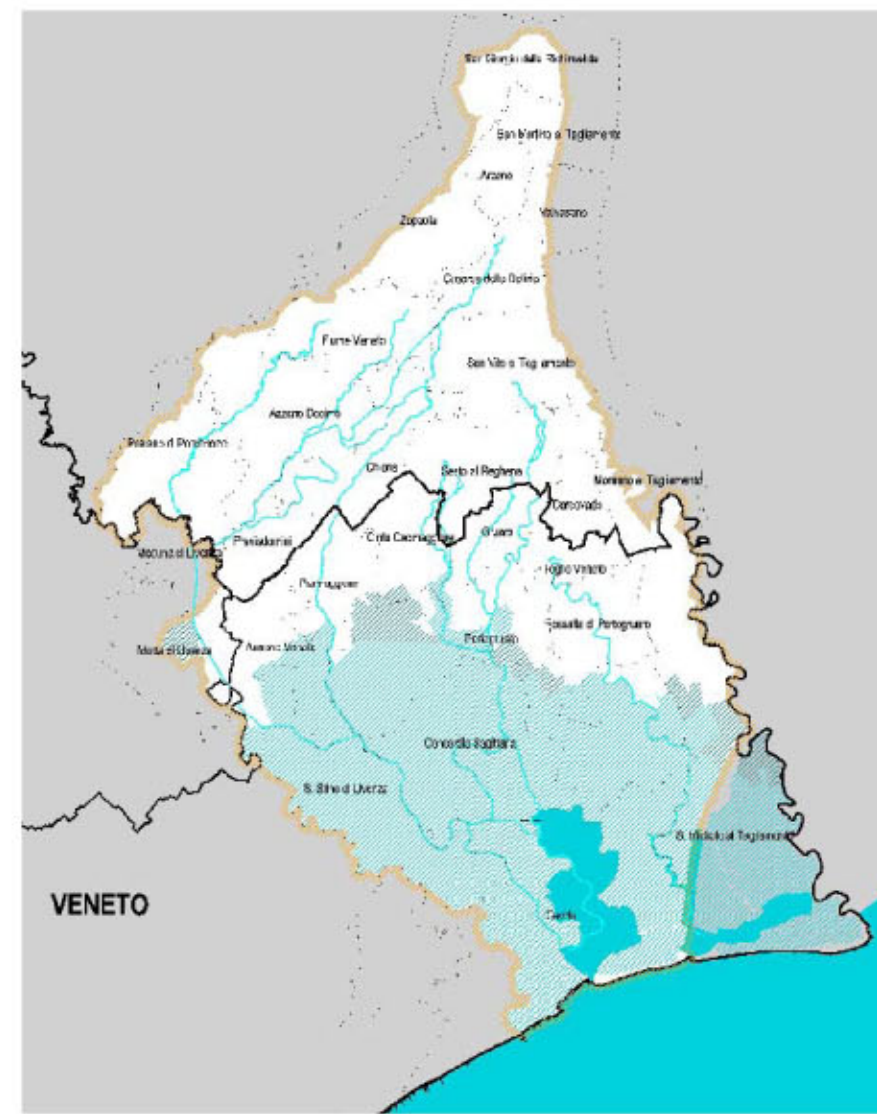
Acque superficiali : Il rischio Idraulico







1) LIMITI AMMINISTRATIVI



-  Limite regionale
-  Limiti provinciali
-  Limiti comunali
-  Limite di bacino
-  Limite Consorzi di Bonifica

2) AREE A SCOLO MECCANICO



-  Limite regionale
-  Limiti provinciali
-  Limiti comunali
-  Limite di bacino
-  Aree soggette a scolo meccanico
-  Aree soggette a scolo misto meccanico-naturale